

## 2026 SANITARY MANHOLE RELINING PROGRAM

### Attachment 1 – Photos and Measurements of 2026 Relining Locations

<b>Manhole Relining</b>						
<b>Manhole #</b>	<b>Locations</b>	<b>Description of Work</b>	<b>Scope</b>	<b>Barrel Diameter</b>	<b>Depth (meters)</b>	<b>Notes</b>
85	West of Vistas storm pond	Medium infiltration and encrustation sounds seam of south pipe and barrel	Base and benching	1220	4.16	
90	Pathway south of 29 Vantage Crescent	Infiltration around base and weeping from barrel seams	Full barrel	1220	3.5	
92	Pathway behind 33 Viceroy Crescent	Infiltration around base and weeping from barrel seams	Full barrel	1220	2.5	
196	4826 49 Street	Infiltration around base and weeping from barrel seams	Half barrel	1220	3.09	
204	5703 48 Avenue	Infiltration around base and weeping from barrel seams	Full barrel	1220	2.6	
210	5210 48 Avenue (brick manhole)	Infiltration around base and weeping from barrel seams	Half barrel	1220	2.1	
216	Alley behind 4802 54 Street	Infiltration around base and weeping from barrel seams	Full barrel	1220	2.06	
230	49 Avenue and 51 Street	Infiltration around base and weeping from barrel seams	Half barrel	1220	2.92	
276	5114 46 ST, north side of property	Partial relining & benching repair	Half barrel	1220	2.51	Infiltration in barrel/benching
416	5521 46 Street (across from Tim Hortons)	Infiltration around base and weeping from barrel seams	Full barrel	1220	2.46	

438	52 Street east of 57 Avenue	Infiltration around base and weeping from barrel seams	Full barrel	1220	2.42	
480	5641 57 Avenue	Infiltration around base and weeping from barrel seams	Half barrel	1220	2.82	
483	57 Avenue and Sunrise Crescent	Medium infiltration	Full barrel	1220	3.73	
507	59 Avenue north of 58 Street	Infiltration around base and weeping from barrel seams	Full relining	1220	2.8	Infiltration in barrel/benching
574	63 Avenue and Douglas Place	Infiltration around base and weeping from barrel seams	Full relining	1220	3.58	
577	63 Avenue north of Winter Drive	Infiltration around base and weeping from barrel	Half barrel	1220	4.1	
627	55 Street west of 63 Avenue	Medium infiltration under lead, infiltration dripper from above	Half barrel	1220	3.2	
832	Erhart Close pathway	Heavy encrustation	Half barrel	1220	2.29	
924	5914 47 Avenue	Infiltration around base and weeping from barrel seams	Half barrel	1220	3.5	



MH 627



MH 480



MH 507



MH 832



MH 230



MH 438



MH 507



MH 577



MH 196



MH 210



MH 216



MH 204



MH 276



MH 924



MH 85



MH 483



MH 574



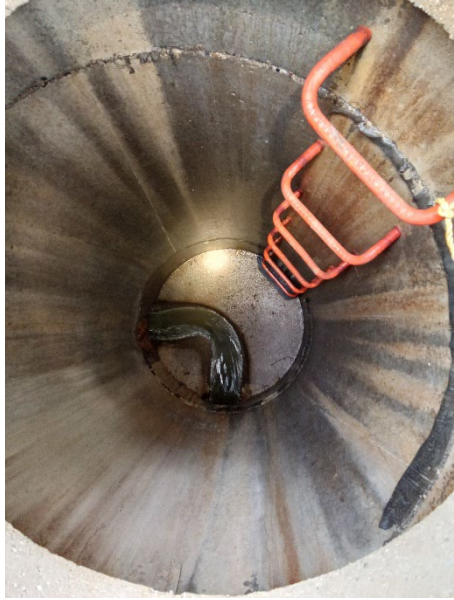
MH 416



MH 92



MH 95



MH 90B



MH 85