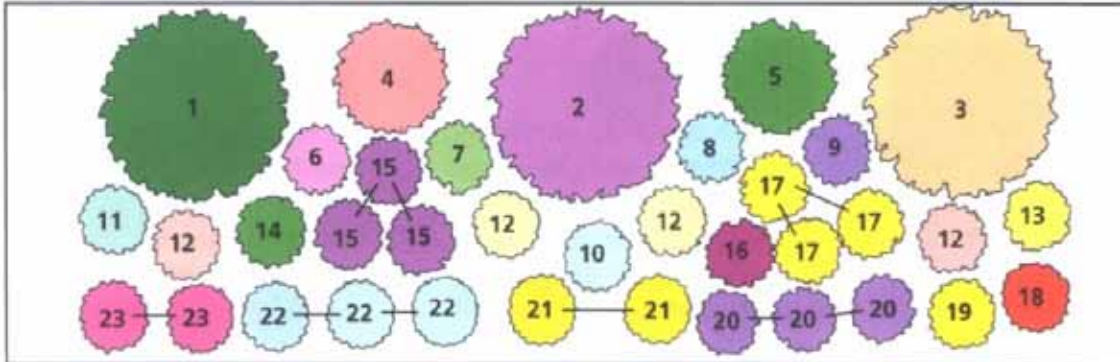


Sample Garden Layouts to Reduce Water Usage

Traditional landscape design creates a constant battle against drought conditions, weed infestation, insect damage, drainage problems, trodden down lawns, and damage due to salt and oily runoff from sidewalks. By taking advantage of plants which thrive under the various conditions which exist around your property, you can create a landscape that is dynamic, beautiful and easy to maintain. Plant drought-resistant plants and grasses which require little or no watering during hot, dry periods. Many commonly available plants (especially established perennials) require no more water than that supplied by Mother Nature. Plant trees and shrubs - a shaded landscape is cooler and therefore, retains more water. Trees and shrubs also provide natural wind breaks, reducing plant water loss from the drying effects of Alberta winds. (diagrams courtesy of CMHC's *Household Guide to Water Efficiency*)



BORDER

Size - 4.5m x 1.5m (15' x 5')

- | | |
|---|--|
| <ol style="list-style-type: none"> 1. <i>Viburnum lantana</i>, Wayfaring Tree 2. <i>Rosa rugosa</i>, Rugosa Rose 3. <i>Philadelphus lewisii</i> 'Waterton', Waterton Mock Orange 4. <i>Miscanthus sinensis</i> 'Gracillimus', Maiden Grass 5. <i>Calamagrostis X acutiflora</i> 'Karl Foerster', Karl Foerster's Reed Grass 6. <i>Liatris spicata</i>, Blazing Star 7. <i>Anthemis tinctoria</i>, Golden Marguerite 8. <i>Eryngium planum</i>, Blue Sea Holly 9. <i>Iris X germanica</i>, Tall Bearded Iris 10. <i>Helictotrichon sempervirens</i>, Blue Oat Grass 11. <i>Artemisia</i> 'Valerie Finnis', Valerie Finnis Sage 12. <i>Hemerocallis</i> Hybrids, Daylily (variety of types) | <ol style="list-style-type: none"> 13. <i>Achillea X 'Moonshine'</i>, Moonshine Yarrow 14. <i>Nepeta xucranica</i> 'Dropmore', Dropmore Catmint 15. <i>Echinacea purpurea</i>, Coneflower 16. <i>Gaillardia X grandiflora</i> 'Burgundy', Burgundy Blanket Flower 17. <i>Ratibida columnifera</i>, Prairie Coneflower 18. <i>Sedum spectabile</i>, Autumn Joy Sedum 19. <i>Oenothera tetragona</i>, Yellow Sundrops 20. <i>Veronica X 'Goodness Grows'</i>, Goodness Grows Speedwell 21. <i>Coreopsis verticillata</i> 'Zagreb', Zagreb Thread-leaved Coreopsis 22. <i>Stachys byzantina</i>, Lamb's Ear 23. <i>Bergenia cordifolia</i>, Heartleaf Bergenia |
|---|--|

To fill spaces and for spring and summer bloom:

Annuals

- *Helianthus annuus*, Sunflower
- *Cleome hasslerana*, Cleome or Spider Flower
- *Cosmos bipinnatus*, Cosmos
- *Salvia sclarea*, Clary Sage

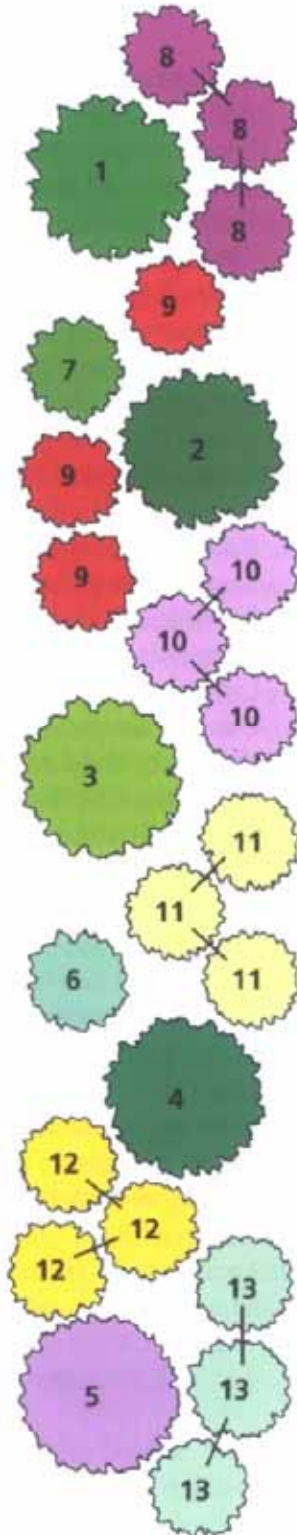
Bulbs

- *Allium aflatunense* 'Purple Sensation', Flowering Onion (Purple Sensation)
- *Narcissus*, Daffodil
- *Tulipa* species, Tulips (various types)



DRIVEWAY STRIP

Size - 4.5m x 1.5m (15' x 5')



1. *Pinus mugo pumilio*, Mugho Pine
2. *Rosa rugosa*, Rugosa Rose
3. *Spiraea X bumalda* 'Goldflame', Goldflame Spirea
4. *Juniperus sabina* 'Tamariscifolia', Tamarix Savin Juniper
5. *Potentilla fruticosa* 'Pink Princess', Pink Princess Bush Cinquefoil
6. *Helictotrichon sempervirens*, Blue Oat Grass
7. *Yucca filamentosa*, Spanish Dagger
8. *Sedum X 'Vera Jamieson'*, Vera Jamieson's Stonecrop
9. *Gaillardia X grandiflora* 'Red Plume', Red Plume Blanket Flower
10. *Geranium X cantabrigiense*, Geranium (Alpine or border type)

11. *Oenothera missouriensis*, Ozark Sundrops
12. *Hemerocallis* Hybrids 'Stella de Oro', Stella de Oro Daylily
13. *Cerastium tomentosum*, Snow-in-Summer

To Fill Spaces and for Spring & Summer Bloom:

Annuals

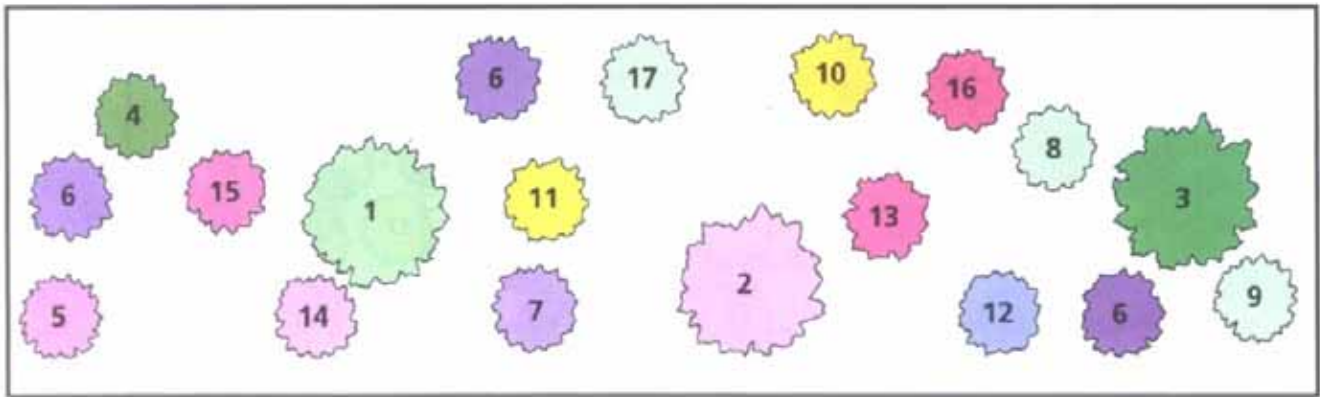
- *Verbena X Hybrids*, Summer Verbena
- *Eschscholzia californica*, California poppy

Bulbs

- *Narcissus*, Daffodil
- *Tulipa species*, Tulips (various types)



Iris X germanica, Tall Bearded Iris



ROCK GARDEN

Size - 4.5m x 1.3m (15' x 4')

1. Juniperus horizontalis, Creeping Juniper
2. Spiraea japonica, 'Little Princess', Little Princess Spiraea
3. Yucca glauca, Soapweed
4. Phlox subulata, Moss or Creeping Phlox
5. Armeria juniperifolia, Juniper Thrift
6. Iris X pumila Hybrids (3 clumps), Dwarf Bearded Iris (variety of types)
7. Veronica filifolia, Speedwell
8. Anemone pulsatilla vulgaris, Pasque Flower
9. Oenothera missouriensis, Ozark Sundrop
10. Alyssum saxatile, Basket-of-Gold
11. Achillea 'King Edward', King Edward yarrow
12. Campanula carpatica, Carpathian Bellflower
13. Dianthus gratianopolitanus 'Tiny Rubies', Tiny Ruby Cheddar Pinks
14. Thymus X citriodorus 'Doone Valley', Doone Valley Lemon Thyme
15. Sedum kantschaticum, Russian Stonecrop
16. Sedum X 'Bertram Anderson', Bertram Anderson's Stonecrop
17. Linum flavum, Yellow Flax

To fill spaces and for spring and summer bloom:

Annuals

- Cosmos sulphureus 'Ladybird', Ladybird Mexican Aster
- Dysodia tenuiloba, Dahlberg Daisy
- Phacelia campanularia, California Blue Bell
- Portulaca grandiflora, Rose Moss
- Zinnia angustifolia, Mexican Zinnia

Bulbs

- Allium oreophilum, Ostrowsky Onion
- Scilla sibirica, Siberian Squill
- Tulipa tarda, Tarda Tulip

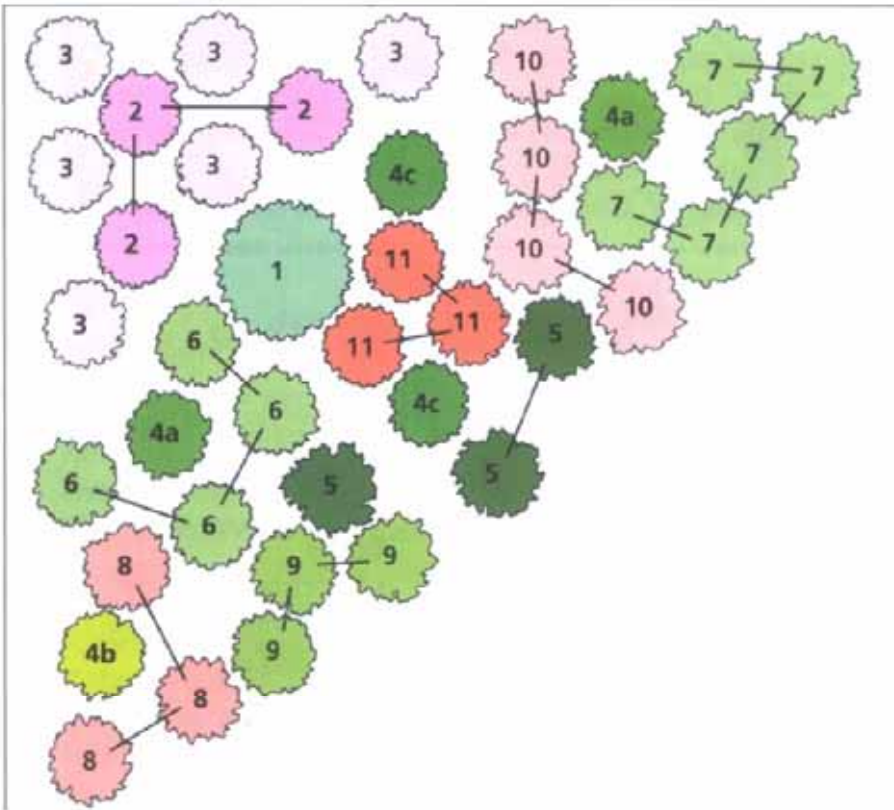
Jan Wilkens



Rock gardens are ideal for difficult to plant slopes and banks. They reduce erosion and runoff.

SHADY CORNER

Size - 3m x 3m (10' x 10')



1. *Elaeagnus angustifolia*, Russian Olive
2. *Dicentra spectabilis*, Old-fashioned Bleeding Heart
3. *Geranium macrorrhizum*, Geranium (border type)
- 4a. Hosta 'Royal Standard', or other green-leafed Hosta
- 4b. Hosta 'August Moon', or other gold-leafed Hosta
- 4c. Hosta 'Albo-marginata', or other variegated Hosta
5. *Epimedium X rubrum*, Rubrum Barrenwort
6. *Lamiumstrum galeobdolon* 'Herman's Pride', Herman's Pride False Lamium
7. *Lamium* 'White Nancy'
8. *Heuchera americana* 'Ruby Veil', Ruby Veil Coral Bells
9. *Aruncus aethusifolius*, Dwarf Korean Goatsbeard
10. *Tiarella wherryi*, Foamflower
11. *Luzula sylvatica*, Greater Wood Rush



For Spring Bloom:

Bulbs

- *Anemone blanda*, Grecian Windflower
- *Scilla campanulata*, Squill